



NTSC U/C

PlayStation™



SLUS-00236



FADE TO BLACK™



WARNING: READ BEFORE USING YOUR PLAYSTATION GAME CONSOLE

A very small percentage of individuals may experience epileptic seizures when exposed to certain light patterns or flashing lights. Exposure to certain patterns or backgrounds on a television screen or while playing video games, including games played on the PlayStation game console, may induce an epileptic seizure in these individuals. Certain conditions may induce previously undetected epileptic symptoms even in persons who have no history of prior seizures or epilepsy. If you, or anyone in your family, has an epileptic condition, consult your physician prior to playing. If you experience any of the following symptoms while playing a video game—dizziness, altered vision, eye or muscle twitches, loss of awareness, disorientation, any involuntary movement, or convulsions—**IMMEDIATELY** discontinue use and consult your physician before resuming play.

WARNING TO OWNERS OF PROJECTION TELEVISIONS:

Still pictures or images may cause permanent picture-tube damage or mark the phosphor of the CRT. Avoid repeated or extended use of video games on large-screen projection televisions. Refer to your projection TV instruction manuals for more details.

HANDLING YOUR PLAYSTATION DISC

- ◇ The compact disc is intended for use only with the PlayStation game console.
- ◇ Do not bend it, crush it, or submerge it in liquids.
- ◇ Do not leave it in direct sunlight or near a radiator or other source of heat.
- ◇ Be sure to take an occasional rest break during extended play.
- ◇ Keep this compact disc clean. Always hold the disc by the edges and keep it in its protective case when not in use. Clean the disc with a lint-free, soft, dry cloth, wiping in straight lines from center to outer edge. Never use solvents or abrasive cleaners.

This product has been rated by the Entertainment Software Rating Board. For information about the ESRB rating, or to comment about the appropriateness of the rating, please contact the ESRB at 1-800-771-3772.

CONTENTS

GETTING STARTED	2
Introduction	2
Starting the Game	3
Control Summary	4
Main Menu	6
Start	6
Options Menu	7
Resume Menu	8
PLAYING THE GAME	11
Heads Up Display	11
Inventory	14
Communications	15
Actions	15
Bullet Types	17
Inventory Objects	18
Other Useful Objects	20
Pause Menu	24
Saving Games	25
Loading Games	26
STRATEGY	27
Stuck Already?	27
Level 1 Walkthrough	28
CREDITS	34

GETTING STARTED

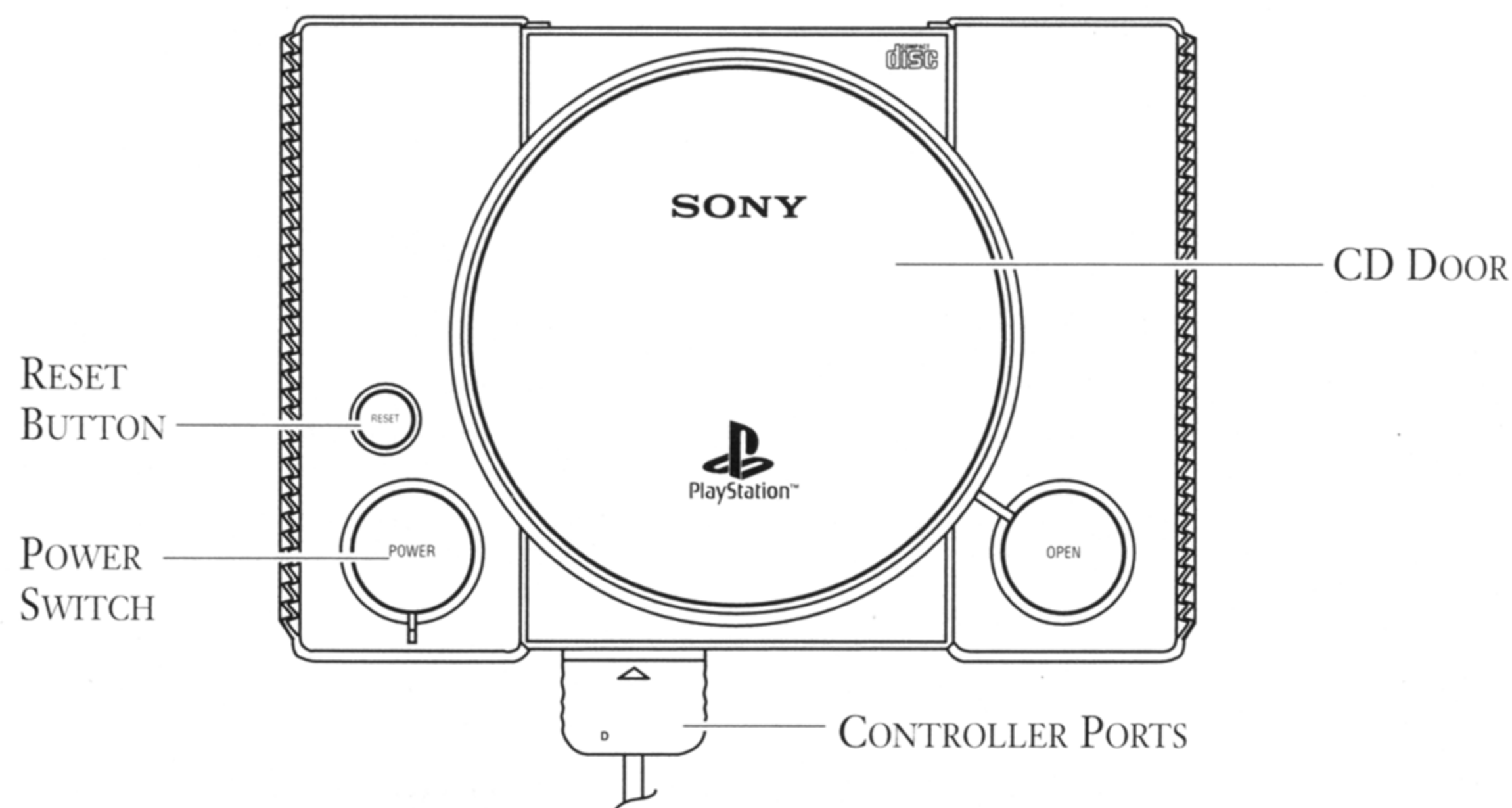
Introduction

2190 AD. The solar system is in the clutches of an alien race, a race beyond control. Morphs—all surface, no substance—are able to replicate any shape at will. Controlled by auxiliary-master brains, this breed of impostors has systematically reduced mankind to a whimpering quagmire of indecision and paralysis.

Enter Conrad. Plucked from a cryogenic slumber, the hero is installed in a moon-based penitentiary where he befriends dissident leader John O'Connor, also a prisoner. The pair escape to an orbital base occupied by Mandragore, the rebel organization with whom O'Connor is affiliated.

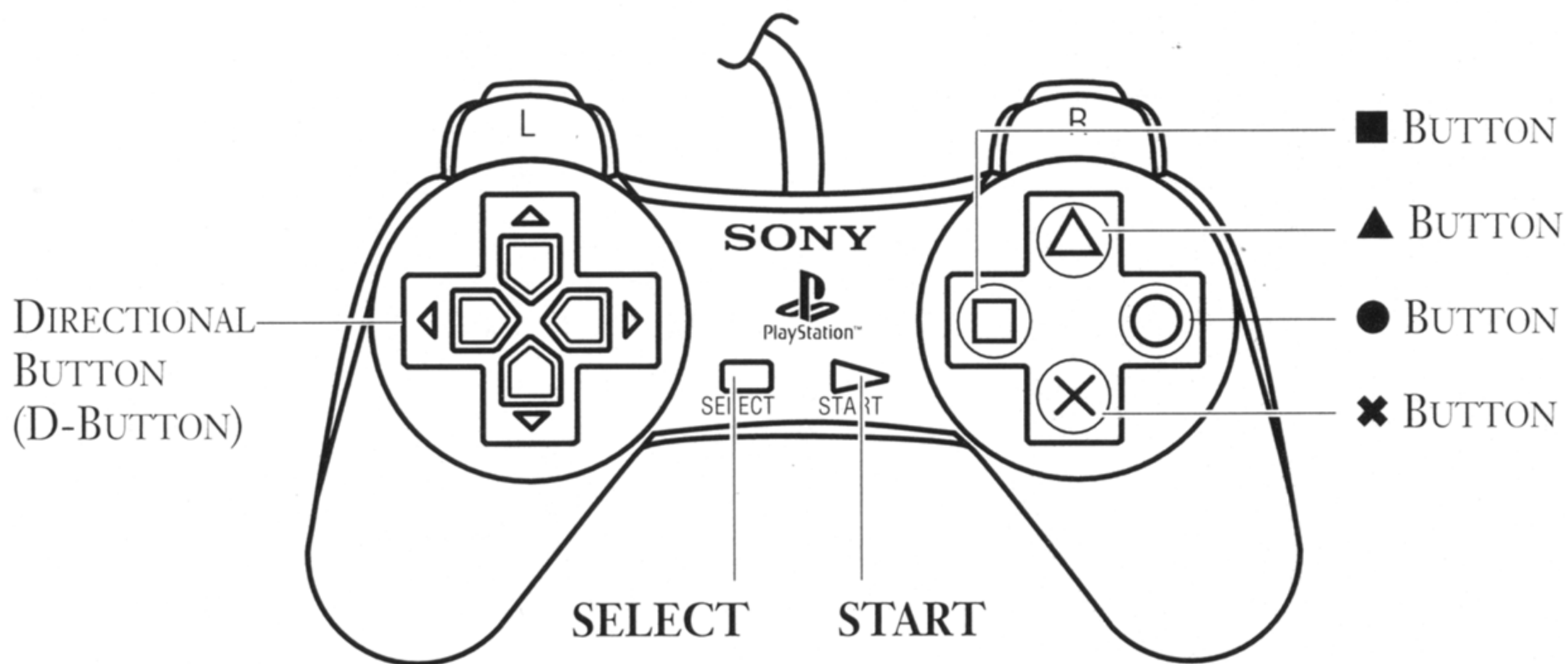
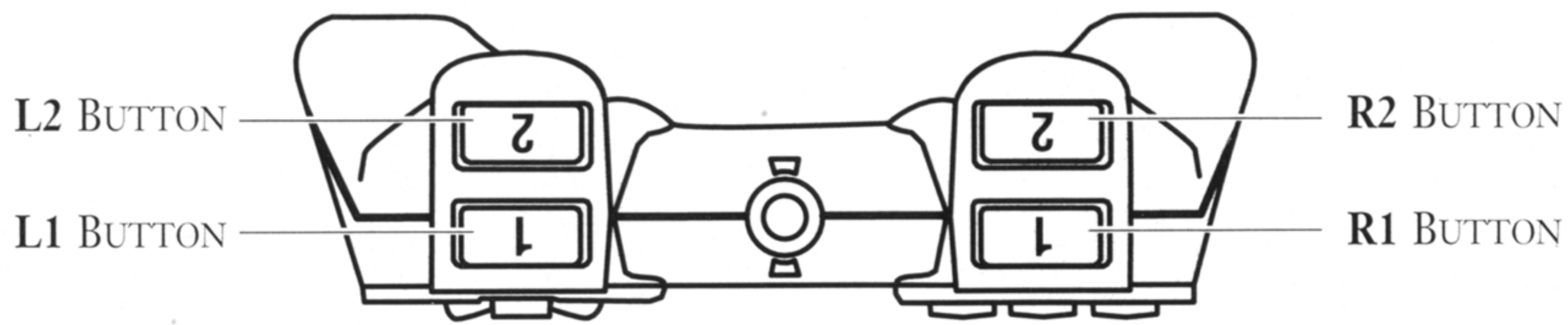
Thus Conrad is recruited—his mission, as saboteur, to run covert missions for Mandragore in attempt to destroy the Morph empire. Conrad knocks down the walls one by one, until he discovers the true meaning of a twisted mind.

Starting the Game



1. Set up your PlayStation game console according to the instructions in its Instruction Manual. **Make sure the power is OFF before inserting or removing a compact disc.**
 2. Insert the *Fade to Black*[™] disc and close the CD door.
 3. Insert game controller and turn on the PlayStation game console.
 4. Follow on-screen instructions to start a game.
 5. Following the introduction sequence and credits, the Main menu appears. See *Main Menu* on page 6.
- To skip the introduction sequence, press **×** or **START**.

Control Summary



NOTE: The controls listed below and later in the manual are the default setting (Novice 1). Some advanced controls are only available on regular and expert control configurations. To change the default setting, see *Controller* on page 7.

Jump	Press ●
Left step	L2
Right step	R2
Walk	D-Button ↑
Back up	D-Button ↓
Crouch/Duck	L1
Turn left/right	D-Button ↔
Use/Activate buttons/ elevators/open lockers	Press ▲
Throw a mine	L1 + R1
Run	Press ✕
Draw gun/shoot/autoreload	Press ■
Reload gun	R1
Accelerate spaceship	Press ✕
Open inventory	SELEC
Pause menu	START

MAIN MENU

NOTE: Use these controls for all menus.

- To choose an option, D-Button ↑↓.
- To select an option, press ✕.
- To return to the previous screen, press ▲.

GO DIRECTLY
TO A NEW GAME

ACCESS GAME OPTIONS

SAVE, LOAD,
OR ENTER PASSWORDS



Start

- To start a new game press ✕.
 - To start a saved game, D-Button ↓ to the game you want and press ✕.
-

NOTE: To start a saved game you must first load it into the temporary save-game slots. See *Load* on page 9.

Options Menu

SKILL

- To cycle through skill levels, press **✕**.

SKILL LEVEL	CONRAD'S BULLETS	ENEMY BULLETS
EASY	2X damage	¹ / ₂ damage
MEDIUM	normal	normal
HARD	¹ / ₂ damage	2X damage

SOUND

Adjust the volume of sound effects and music played during the game.

- To adjust volume, D-Button **← →**.
- To toggle between MUSIC and EFFECTS, D-Button **↑ ↓**.
- To select a tune, press **L1/R1**.
- To play the selected tune, press **●**.
- To select Autoplay mode, press **■**.
- To pause a tune, press **SELECT**.
- To resume a paused tune, press **START**.
- When finished, press **✕**. The Options menu appears.

CONTROLLER

Fade to Black offers six different control configurations to suit your style of play. There are two configurations each for novice, regular, and expert players.

- To cycle through configuration choices, D-Button **← →**.
A diagram of each configuration appears.

- To view **L1**, **L2**, **R1**, and **R2** controls, D-Button **↑**.
- To select a configuration, press **✕**. The Options menu appears.

LANGUAGE

Choose a language for game dialog. The menus will remain in English.

- To cycle through language options, D-Button any direction.
- To select a language, press **✕**. The Options menu appears.

CAPTION

The caption option allows you to see on-screen messages during the cinematic sequences of the game.

- To toggle captions ON/OFF, press **✕**.

STEREO

- To toggle stereo ON/OFF, press **✕**.

Resume Menu

PASSWORD

NOTE: You are given a password for each level which can be viewed when accessing the Pause menu. See *Pause Menu* on page 24.

- To enter a password, press **●**, **■**, **▲**, or **✕** to enter the code. Then press **START**.
- To go back one space, D-Button **←**.
- To cancel, press **SELECT**.

Once you have entered a valid password:

1. Return to the Main menu, select **START** and press **✕**. The game loaded by your password appears at the top of the screen.
2. Press **✕** to begin at the level loaded by your password.
- Passwords take you to the beginning of a level with minimal equipment.

LOAD

NOTE: To load a temporary saved game while you are playing, see *Loading Games* on page 26.

To load a game from the Memory Card into the temporary save-game slots:

1. Select LOAD from the Resume menu and press **✕**.
2. D-Button **↑↓** to the game saved on your Memory Card that you want to load into the temporary save-game slot and press **✕**.
3. D-Button **↑↓** to select the destination temporary save-game slot and press **✕**.

To start a saved game:

1. Select START from the Main menu and press **✕**.
2. D-Button **↑↓** to select the game you want to load and press **✕**. The game begins.

SAVE

NOTE: You only need to save a game to your Memory Card when you are done playing *Fade to Black*. While you are playing, it is easier to use the temporary save-game slots. See *Saving Games* on page 25.

To copy a game from a temporary save-game slot to your Memory Card:

1. Select SAVE from the Resume menu and press ✕.
2. D-Button ↑↓ to select the temporary saved game that you want to save to your Memory Card and press ✕.
3. D-Button ↑↓ to select the destination Memory Card slot and press ✕.
4. If a saved game already occupies the Memory Card slot that you are saving to, you are asked to confirm the overwrite.
 - To confirm the overwrite, press ✕.
 - If you do not want to overwrite, press ▲ to go back and use the password from the Pause menu to continue your game.
5. You are prompted to enter a name. You must overwrite a previously saved game if a file already exists.
 - To change a letter, D-Button ↑↓.
 - To accept a letter, press ✕.
 - To go back one space, D-Button ←.
 - After entering your name, select END and press ✕.
6. Your game is now saved to your Memory Card.
 - To continue, press ✕. The Resume menu appears.

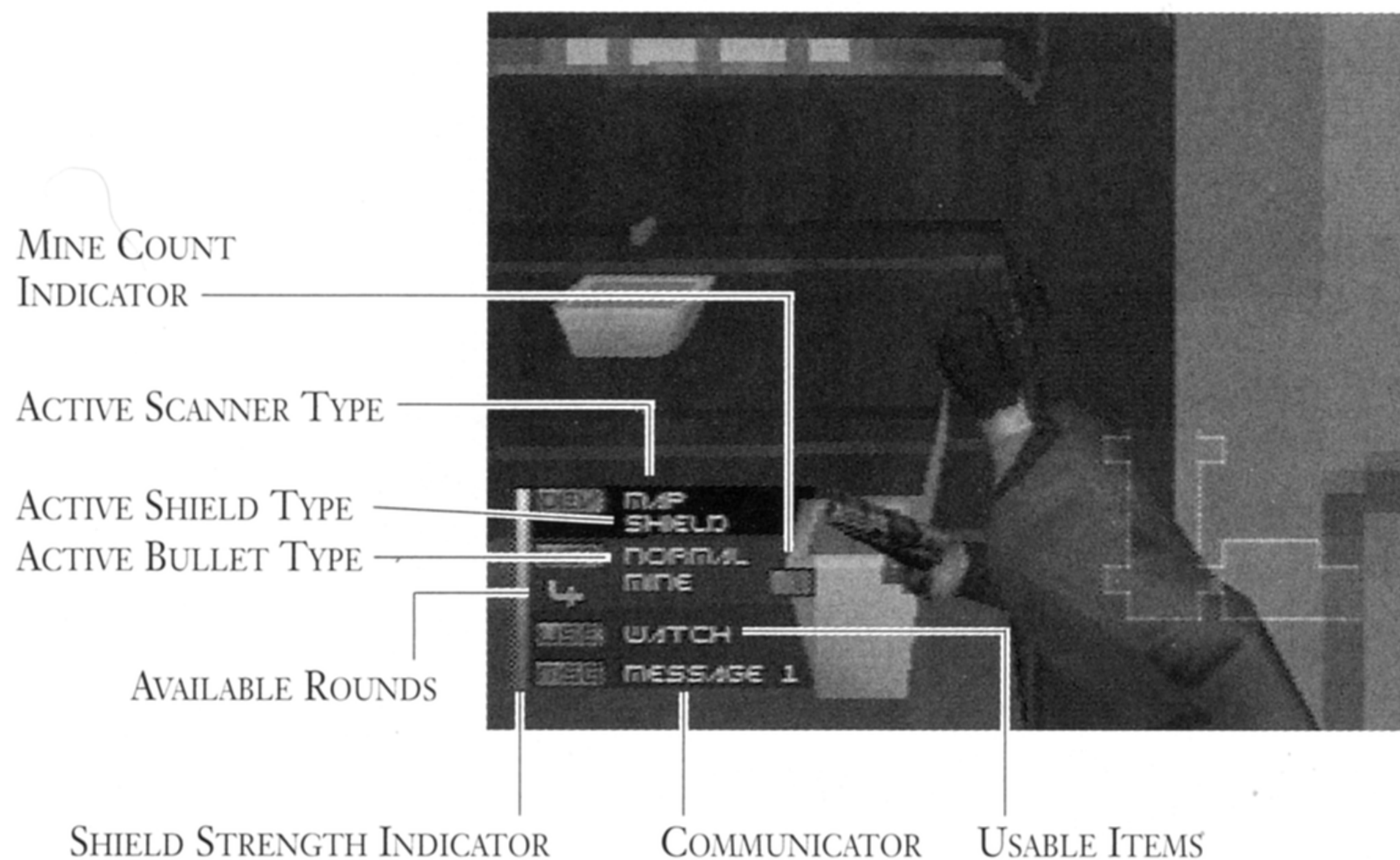
DEMO

The creators of *Fade To Black* have provided a demonstration to familiarize you with the game's workings. Just sit back and watch Conrad do his thing.

- A demo starts automatically after 30 seconds of inactivity on the Main menu.
- To exit a demo, press any button.

PLAYING THE GAME

Heads Up Display



SHIELD STRENGTH INDICATOR

This indicates the status of Conrad's protective garments. When the yellow bar reaches the bottom of the scale, the shield is ineffective, and Conrad has no protection. When the shield is at low strength, the Shield Strength Indicator flashes.

The shield can be restored to full strength by stepping on a Charging Station and pressing ▲. See *Charging Station* on page 24 for more information.

Energy Rechargers may be found throughout the game.

ACTIVE SCANNER INDICATOR

This indicates the type of active scanner. The scanner's name flashes when in use.

To activate an alternative scanner:

1. To access the Inventory, press **SELECT**.
2. D-Button **↑↓** to highlight the Active Scanner Type.
3. D-Button **←→** until the scanner you wish to activate appears. (You must obtain alternate scanners before they are available.)
4. To return to the game, press **SELECT**.

NOTE: Some scanners use the shield's energy. When you activate inventory devices, shield strength diminishes slowly but steadily. Use these items sparingly.

MINE COUNT INDICATOR

This indicates the number of Bouncing Mines in Conrad's inventory.

ACTIVE SHIELD INDICATOR

This indicates the type of shield currently employed. The Shield's name flashes when in use.

To activate an alternative shield:

1. Press **SELECT** to access the Inventory.
2. D-Button **↑↓** to highlight the Active Shield Type.
3. D-Button **←→** until the shield you wish to activate appears.
(You must obtain alternate shields before you can activate them.)
4. To return to the game, press **SELECT**.

NOTE: When you change from a standard shield to an alternate one, such as the Anti-Radiation shield, shield strength diminishes slowly but steadily.

ACTIVE BULLET TYPE

This indicates the type of ammunition currently activated in Conrad's gun.

To activate an alternative type of ammunition:

1. Press **SELECT** to access the Inventory.
2. D-Button **↑↓** to highlight the Active Bullet Type.
3. D-Button **←→** until the ammunition type you wish to activate appears. (You must obtain alternate ammunition before you can activate them.)
4. To return to the game, press **SELECT**.

AVAILABLE ROUNDS

- This indicates the number of rounds remaining in the loaded clip.
- To load a new clip, press ■ or **R1**.

NOTE: When using Novice and Regular control configurations press ■ to autoreload. When using Expert control configurations, you must reload manually by pressing **L1**. See *Controller* on page 7 for more information.

USABLE ITEMS

To activate a Usable Item:

1. Press **SELECT** to access the Inventory.
2. D-Button ↑ to highlight Item in Use.
3. D-Button ← → to the item you want to use.
4. Press **SELECT** to return to the game.
5. Press ▲ to activate the selected item.

Inventory

The Inventory holds items and messages you collect as you move.

- To access the Inventory, press **SELECT**.
- To cycle inventory categories, D-Button ↑↓.
- To select inventory items, D-Button ↔.
- To get detailed information of items, press ✕.
- To exit the Inventory, press **SELECT**.

Communications

Your communicator periodically registers messages alerting you of mission updates and objectives. When you receive a new message, the message box in your inventory flashes.

To view a message:

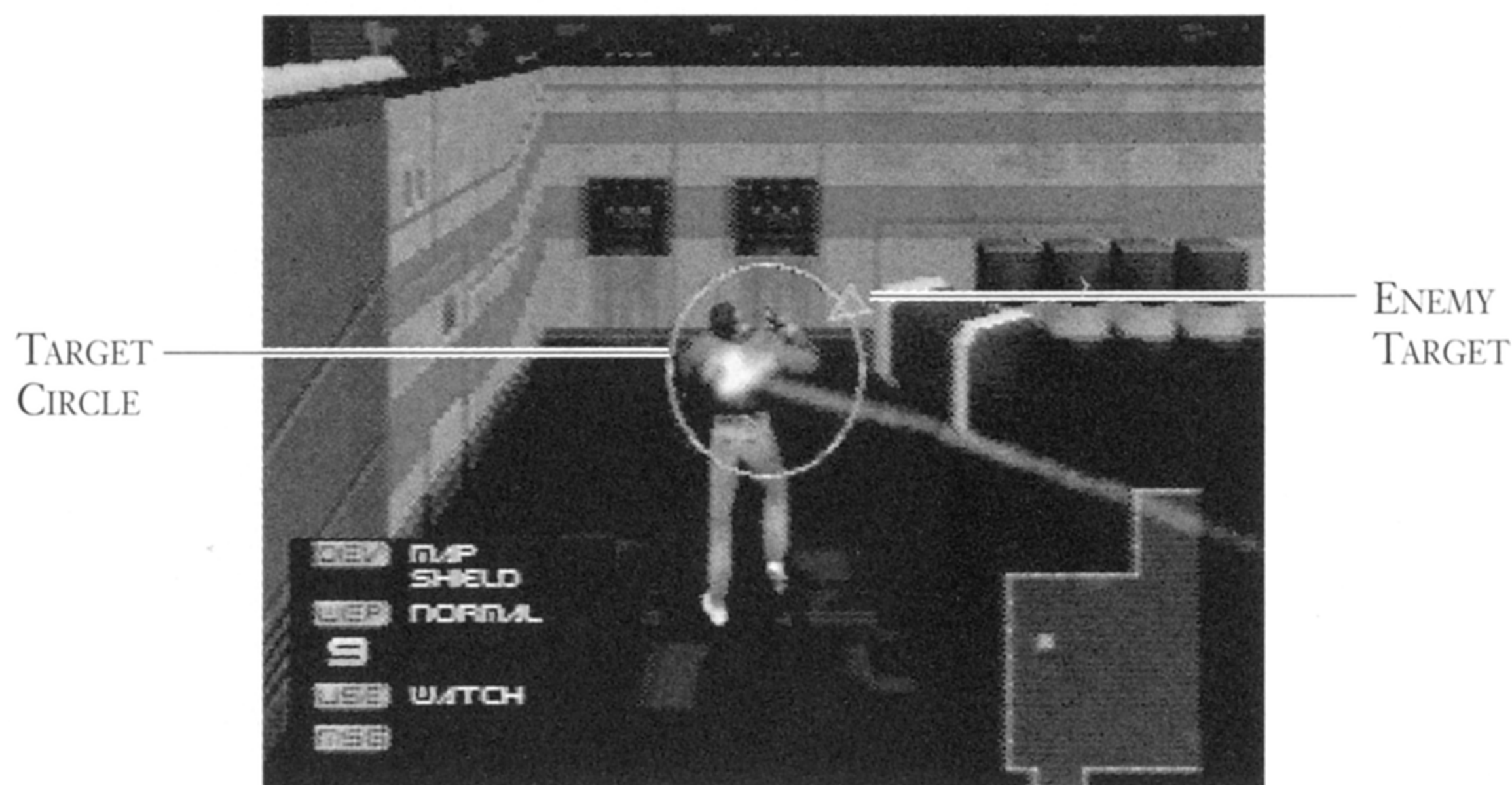
1. Press **SELECT** to access the Inventory.
2. D-Button **↑↓** to highlight the communicator.
3. D-Button **←→** to select a message.
4. Press **×** to view a message.
5. Press **×** to return to the Inventory or **SELECT** to return to the game.

Actions

MOVING

See the inside back cover of the manual or *Control Summary* on page 4 for the controls.

SHOOTING



- To aim, press **■** to activate Combat mode. A red target icon appears on the target when your aim is on.
- To shoot, press **■** when in Combat mode.
- To reload, press **■** or **R1**. Each clip holds 9 bullets.

NOTE: If a green target circle with a green triangle appears on Conrad, a Morph or machine is targeting him. The triangle indicates the Morph's or machine's position relative to Conrad.

Conrad also has access to Bouncing Mines which bounce off walls until they find a target.

- To throw a Bouncing Mine, press **L1 + R1** when NOT in Combat mode.

For more information on weaponry, see *Bullet Types* on page 17.

Inventory Objects

USABLE ITEMS

Watch

Elapsed time since the start of a new game.

Keys, Codes, and Access Passes

Access locked rooms. Once these are picked up, Conrad uses them automatically as needed. Accessing these from the Inventory is unnecessary.

Energy Recharger

Boosts Conrad's energy 50%.

SHIELDS

Normal Shield

Protects Conrad from light enemy gunfire by generating a magnetic field. Drains no energy.

Anti-Radiation Shield

Protects Conrad from radiation. Drains little energy.

Camouflage Shield

Renders Conrad invisible to all Morphs but the Predator Morph, who uses the same type of camouflage. Drains moderate energy.

SCANNERS

Map Scanner

Displays a local view of Conrad's current level. Drains no energy.

Info Scanner

Displays the amount of energy (as a percentage) a targeted object possesses. Drains little energy.

Field Scanner

Displays hidden fields or pressure-sensitive floor switches other scanners can't detect. Drains moderate energy.

Energy Scanner

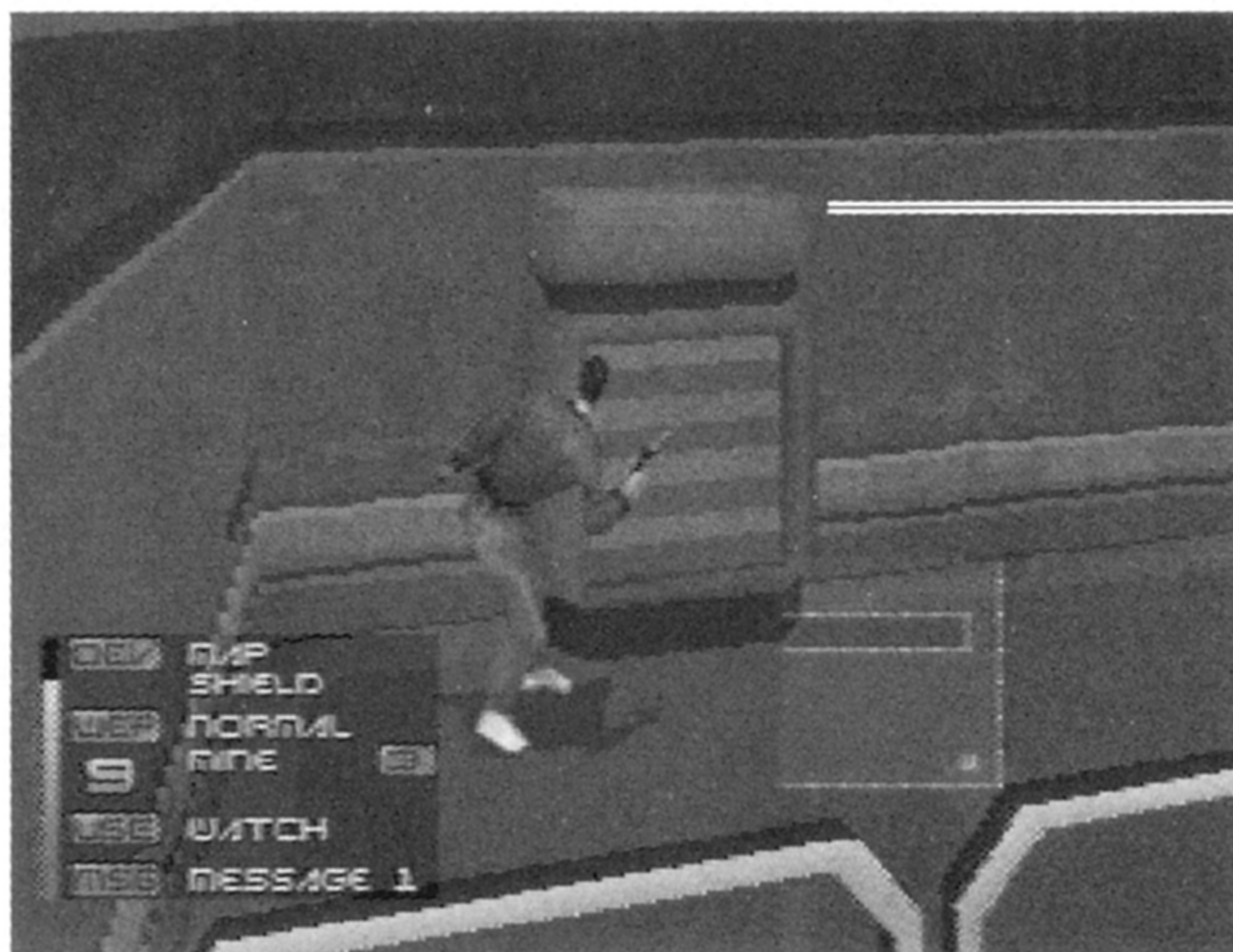
Displays all active energy recharge sources on Conrad's current level. Drains little energy.

Object Scanner

Displays lockers on Conrad's current level. Drains very little energy.

Other Useful Objects

LOCKERS

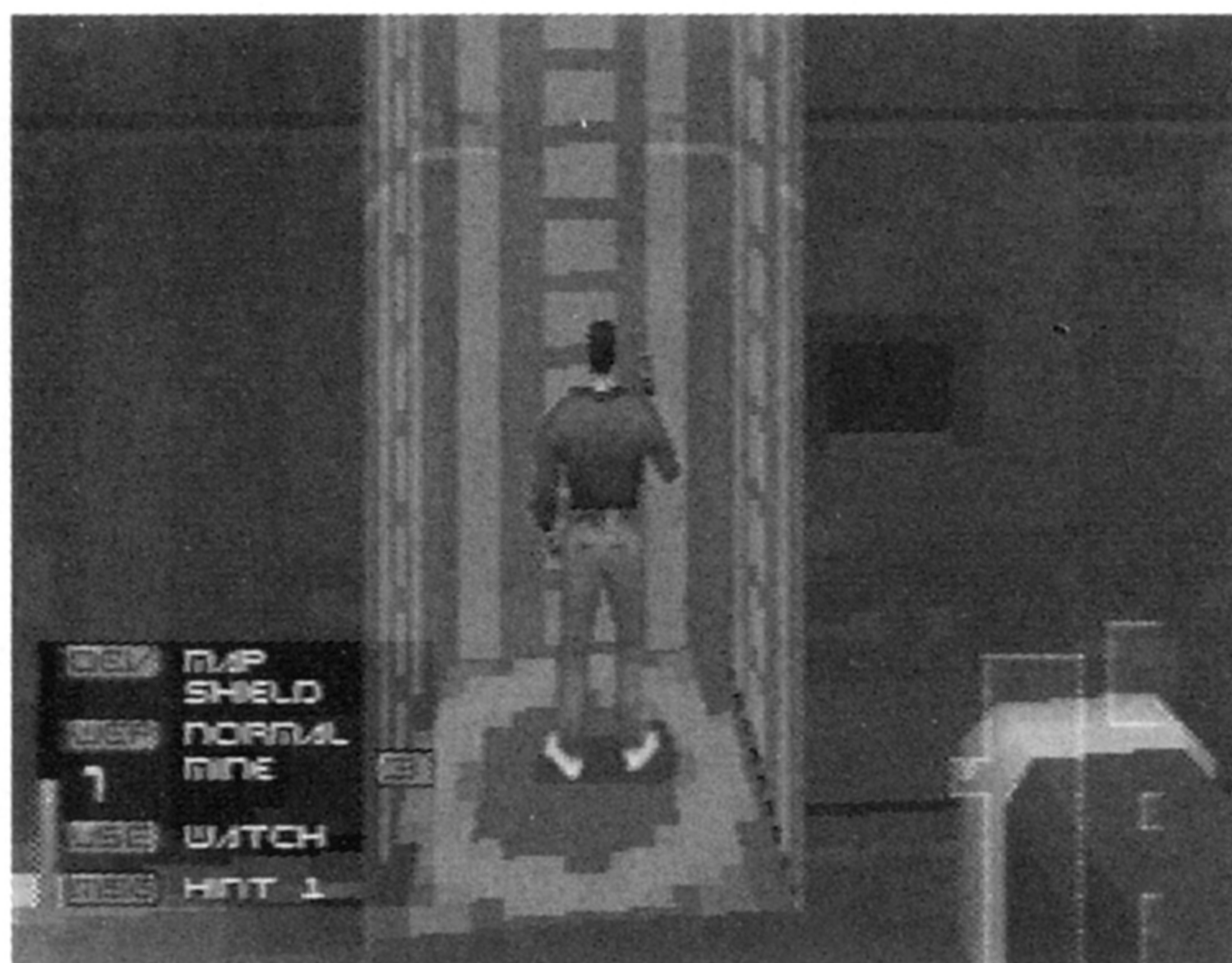


CLOSED
LOCKER

Lockers contain items of interest. Be sure to check out all of them.

- To open a locker, stand directly in front of it and press ▲. Press ▲ again and any items within the locker are automatically added to your inventory.

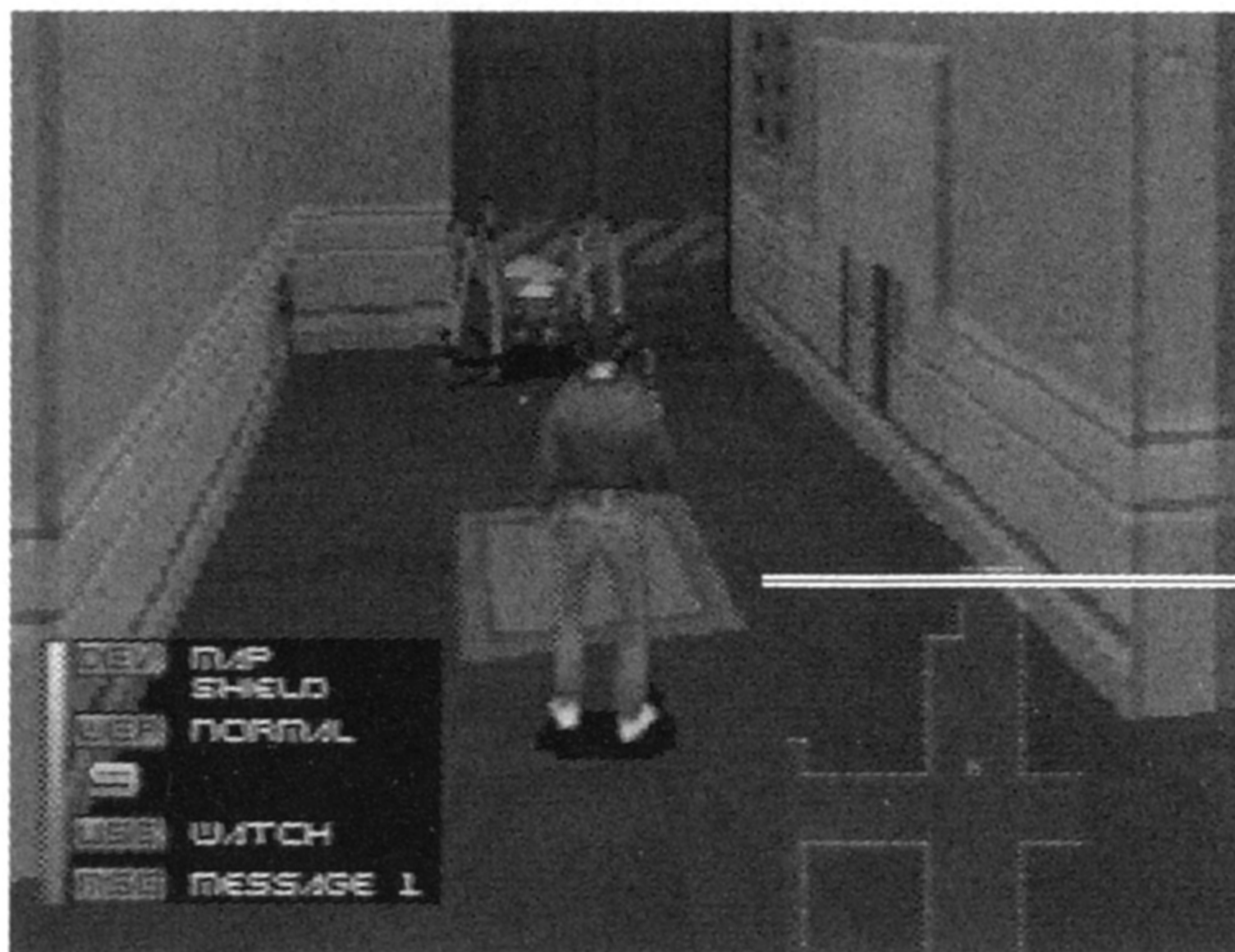
TELEPORTS



The Morphs' teleportation system transports you to a set location. Active teleporters light up when Conrad enters them.

- To teleport, stand on an ACTIVE teleporter and press ▲.

FLOOR PANELS



Some floor panels trigger doors, some train enemy weapons on Conrad, and some are electrified.

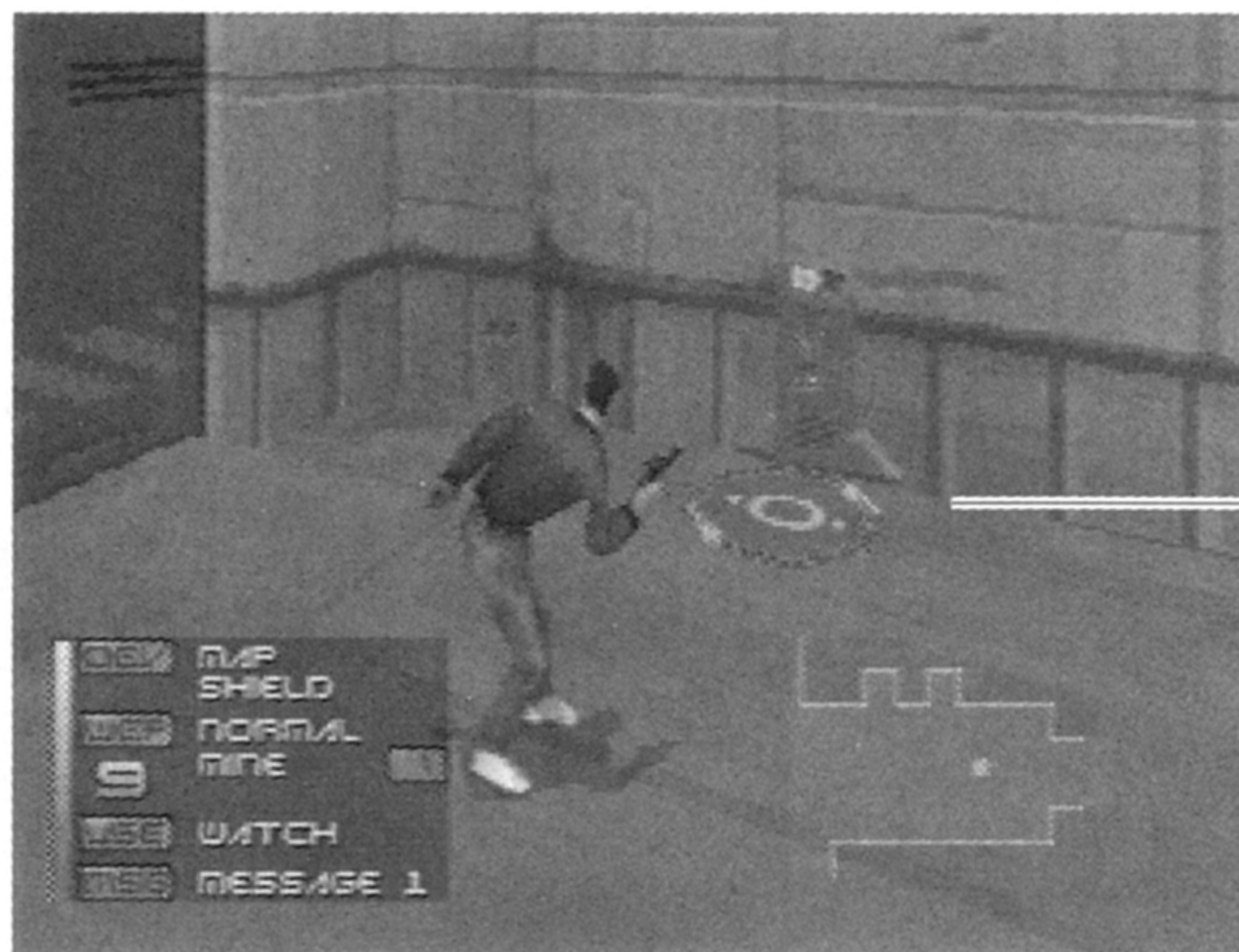
- To activate a floor panel, step on the floor panel.
- To pass without activating a floor panel, walk around it or press ● to jump over it.

ACCESS PANELS

ACCESS
PANEL

Step in front of a panel and press ▲ to activate devices or gain entry to specified locations.

CHARGING STATION



CHARGING
STATION

Step on these and press ▲ to recharge Conrad's shield.

Pause Menu

The Pause menu allows you to change sound and music volume as well as save, load, and quit games.

- To access the Pause menu during a game, press **START**.
- To select a Pause menu item, D-Button ↑↓.
- Your password for the current level appears at the top of the menu.

MUS

- To adjust music volume, D-Button ↔.

SFX

- To adjust sound effects volume, D-Button ↔.

SAVE

See *Saving Games* on page 25.

LOAD

See *Loading Games* on page 26.

RESUME

- To resume the current game, press **X**.

QUIT

- To quit the current game, press **X**. A confirmation prompt appears.
- To confirm/cancel, D-Button **← →** and press **X**. The Main menu appears when you choose to quit.

Saving Games

IMPORTANT NOTE: Saving a game is a 2 step process. To permanently save a game to your Memory Card, you must exit the game and access the save feature in the Resume menu. See *Resume Menu* on page 8 for details.

Fade to Black contains 4 temporary, reusable, save-game slots.

To save a game in progress:

1. Press **START**.
 2. D-Button **↑ ↓** to **SAVE**, then press **✕**.
-

NOTE: An unused save-game slot is marked with an **X**.

3. To choose a save-game slot, D-Button **← →** and then press **✕**.

4. If a saved game already occupies the save-game slot that you are saving to, you are asked to confirm the overwrite.
 - To confirm the overwrite, D-Button \leftrightarrow and then press \times .
 - If you do not want to overwrite, use the password from the Pause menu to continue your game.
5. The message “game saved” appears. Your game is now saved to temporary memory.

NOTE: If you do not save your game to the Memory Card before turning off your PlayStation Game Console, your saved game will be lost. To save your game to your Memory Card see *Resume Menu* on page 8.

Loading Games

When Conrad is killed, you are brought to the beginning of the current level. If you saved progress on that level, press **START** to access the Pause menu and then load your saved game.

To load a previously saved game from temporary save-game slots:

NOTE: To load games from the Pause menu, they must be loaded from the Memory Card into the temporary save-game slots. See *Resume Menu* on page 8 for detailed instructions.

1. Press **START**.
2. D-Button $\uparrow\downarrow$ to LOAD, then press \times .
3. To choose a save-game slot, D-Button \leftrightarrow and then press \times .

STRATEGY

Stuck Already?

So how are you going to survive fifty hours of flesh-searing action? With EA's official FADE TO BLACK PLAYERS GUIDE! Packed with intense background information on Conrad and the whole Project Morph situation that is key to finishing the game, it's a must for players with a vengeance for winning. It also features important information on types of weapons and their capabilities, complete maps of every room and passageway on all 13 levels (including all puzzles and enemies), and, for those who play by the book, an exhaustive walkthrough of the project from start to finish. We have included a partial walkthrough for level 1 to get you started.

- Turn Conrad into a sharp-shooting, puzzle-solving action hero—get first-hand information on the most efficient routes, the most effective way to kill morphs, and how to use tools.
- *Fade to Black* world and character background takes you through the events that lead to the game's introduction.
- Mission walkthroughs lead you through all levels of the game with maps, screenshots, and detailed instructions.
- "Artist Profile" section gives you a behind the scenes look at the men and women who created *Fade to Black*.

NOTE: To order the *Fade to Black* clue book, call Electronic Arts Direct Sales at (800) 245-4525.

LEVEL 1 WALKTHROUGH

SECTOR 1: CELL

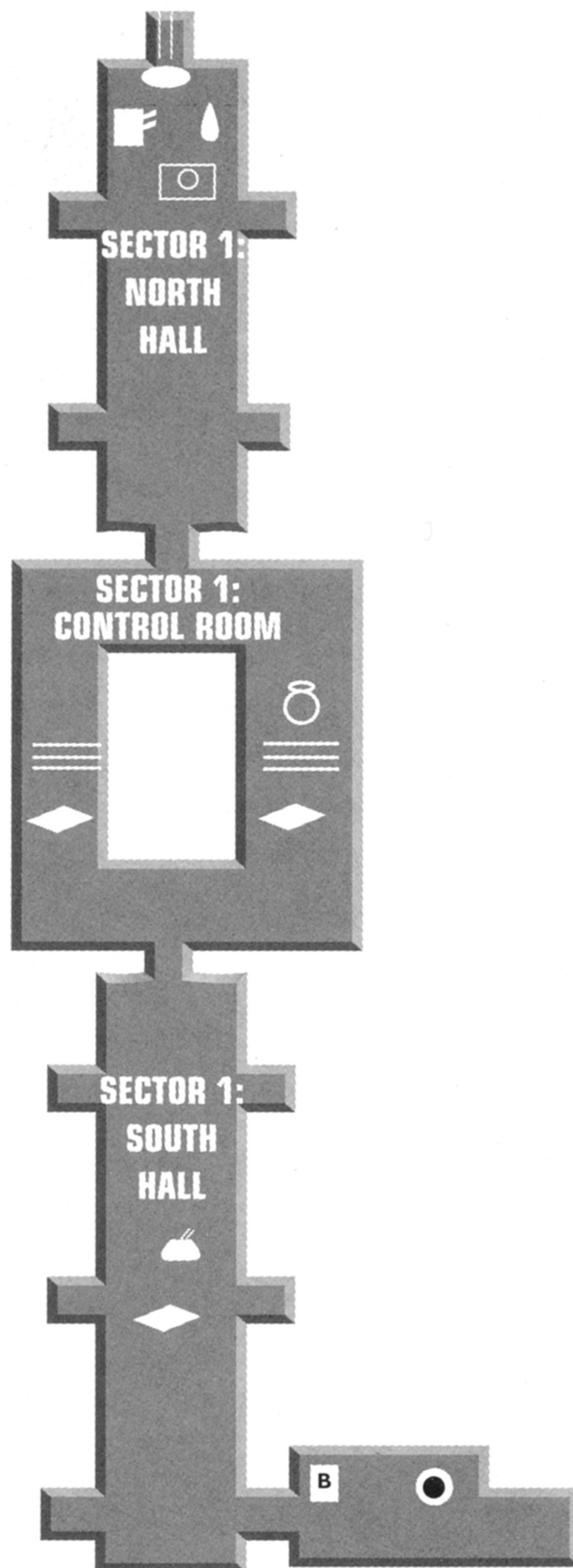
There's a message coming in from John. You'd better read it and get out of there, but before you do it would be wise to take a look in that locker. You'll find a bouncing mine in there, which might come in handy down the road. To open the door, simply walk toward the red lights.

SECTOR 1: SOUTH HALL

The alarm has gone off. Now you're in trouble! You'd better get moving right away, but before you do you should try out your gun on the drone that's patrolling the hallway. One good shot will disintegrate it. Now it's safe to proceed. At the far end of the hallway is a door. To open the door, step on the pad. Run through the door—it won't stay open forever.

SECTOR 1: CONTROL ROOM

Now you're in the Control Room, but there's a problem. The force field bars will not let you pass beyond the foyer. A robot guard waits beyond the green force field. You need to step on the green floor tiles to deactivate the green bars. When the guard comes through, it'll come firing. Either blast the guard to disable its gun or slip past it and try to avoid getting shot. Stand near the red tiles. When the robot rolls over the green tiles, the green force bars will again be deactivated for a few seconds, and you can slip through. If the force bars re-activate while you're passing through, it's curtains for you, so don't hesitate. Now move forward, take a quick left then a quick right to get into the North Hall.



SECTOR 1: NORTH HALL

When you enter to North Hall a gun descends from the ceiling. The gun is controlled by the camera. Shoot out the camera to send the gun back up. Make sure you destroy the camera after the gun has come down, or the gun will not go away. When you destroy the camera, a Morph appears. Blow him away without hesitation and then run to the elevator at the far end of the hall. Activate the elevator.

SECTOR 2: GUARD HALL

Make sure you use the Energy Recharging Device, as you've probably taken at least one hit along the way. Exit through the North door, which is marked by a knife and fork.

SECTOR 3: HALL

A Morph waits to stop your progress. Blast the Morph. If you want to go back to the recharger in the Guard Hall, go ahead and do so; but be ready to face another Morph back there. When you get back to the hall, notice the gun on the West wall. It doesn't pose any threat now, but once your presence in the area is detected, that gun will become a problem. Proceed through the East door into the Cafeteria.

SECTOR 3: SERVING LINE

It looks pretty quiet in here on the serving line, but looks can be deceiving. Before you go around the corner into the dining room, check the locker nearest to the door. There you'll find a couple of bouncing mines. Taking the mines sets off an alarm, which activates the gun in the Hall. You might want to wait until later to take the mines, making sure that you have enough shield left to take three hits from the wall gun.

If you take the mines, the gun starts blasting when you pass by the door. Run to the cafeteria which lies to the north of the serving line.

SECTOR 3: CAFETERIA

You'll find a Morph loitering there. As soon as he sees you he'll start blasting, so be on your guard. One thing you should have figured out by now is that Morphs always blast you without hesitation. It's simply their job. Kill the Morph with extreme prejudice.

Check the locker to the southwest and take the energy recharge device. Exit through the North door into the kitchen.

SECTOR 3: KITCHEN

The cook is terrified and begs for mercy. Save the game at this point. Now, there's no good reason to kill the cook; he's not armed and poses no threat. Don't begrudge him his government job. He's got little ones at home and no education to speak of. All he's doing is trying to make a living. Besides, if you kill the cook, the West door won't open. Exit through the West door to the Meat Locker.

If you've killed the cook and insist on continuing, go back to the Hall outside the cafeteria and pick up the walk through at Sector 3: Serving Line. You'll be proceeding without the valuable explosive bullets.

SECTOR 3: MEAT LOCKER

In the Meat Locker, two Morphs wait in ambush. Plug your nose at the smell of the hanging meat, kill both the Morphs, and then go to the control panel, a secret door off the cafeteria dining room opens.

SECTOR 3: SECRET ROOM

Go through the secret door on the west wall of the dining room. There you'll find a system of corridors protected by electrified tiles. The corridor to the left is impassable. Go forward a few steps and proceed down the corridor to the right. You'll need to jump over the electrified squares to the safe squares, and to do that successfully you'll need to judge your distances carefully.

When you see the locker, open it and remove the exploding bullets and continue to your left. Exit the secret room and return to the serving line. You might want to load the exploding bullets now, or wait until you run into some truly serious trouble.

SECTOR 3: SERVING LINE

If you haven't gotten the mines out of the South West locker, get them now. Once you take the mines, the siren goes and the West Wall gun becomes active. If you don't take the mines, you won't set off the alarm and the wall gun won't notice you. Exit through the West door and run forward.

SECTOR 3: HALL

Duck down the south corridor to the Elevator Hall. You'll take at least three hits from the wall gun if you'd sounded the alarm.

SECTOR 3: GUARD HALL

As soon as you enter the Elevator Hall, a Morph will ambush you. Take care of him, then use the Energy Recharge device. Exit through the West door, marked by a red cross, to the Medic Hall.

SECTOR 2: MEDIC HALL

Now you're in for a real fight. As soon as you enter the room, a mechanical spider appears. It's not easy to kill, and you've got to kill it. Watch out for those barrels; they're heat sensitive and explode without much provocation. When the spider is dead, go ahead and blast the barrels.

Now go down to the locker and grab the Info Scanner and the Hint. After you read the hint, step in front of the control panel and activate it. It opens a secret elevator door in the Southwest corridor. Exit through the Southwest door.

SECTOR 2: WEST HALLWAY (SECRET DOOR ACTIVATED)

Enter the West Hallway and turn to the right just before you reach the first barrier. A door opens, you step into the elevator and up you go.

SECTOR 2: MEDIC STORAGE ROOM

When you step off the elevator, you'll have to deal with a drone and a Morph. Kill them before you take too many hits. Now blast the barrels, which close the Morph regeneration tubes. If you don't blast the barrels, the Morphs in the West Hallway will regenerate continuously, and you'll never get past them. Take the elevator back down to the West Hallway, and then take a right.

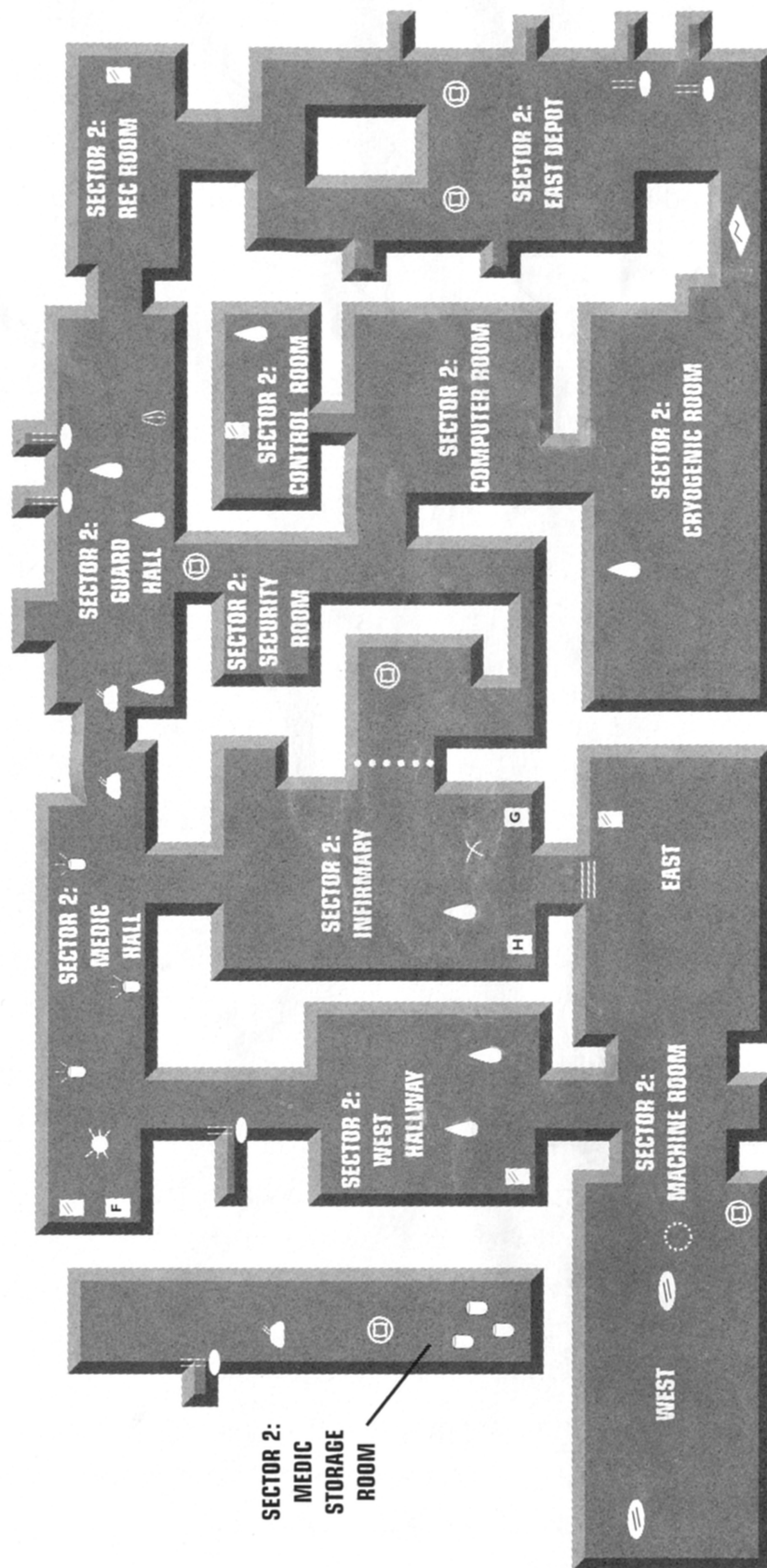
SECTOR 2: WEST HALLWAY

Two Morphs wait in ambush. Dispatch the Morphs. If you took a few hits, you might want to run back to the recharger, power up, and then return. Activate the control panel to open the Machine Room door. Exit through the South door.

SECTOR 2: MACHINE ROOM

A Morph appears from the right side of the room. Waste him. There are two mines in the West room next to a red button, so beware. It's advisable to stay out of there, unless you have a lot of strength left in your shield. The red button deactivates the force bars in front of the Infirmary door. If you don't push the red button, you can use the following method to deactivate those force bars.

In the East room, activate the control panel to lift the Morph tube out of storage. You need to blast the tube while it's passing in front of the red force bars. If you time it just right, you kill the Morph in the container and deactivate the force bars. Now go through the door into the Infirmary.



DELPHINE SOFTWARE INTERNATIONAL

Delphine Software International and **Adeline Software International** are two of fifteen companies belonging to the Delphine Group.

Specializing in the development of computer and video games, Delphine Software International (DSI) was created in 1988.

All Delphine Software International game designs and developments are led by Paul Cuisset. In 1995, 30 programmers, designers and musicians are working in-house for him, using state-of-the-art development tools: 10 Silicon Graphics Indigo and Indigo 2 workstations with Softimage and Alias, 4 infrared Acti-System cameras, a 76-track Automation MIDI recording studio. Without question the label is positioned as one of the world's top video game developers.

In 1993, Delphine Software International propelled itself into the intimate circle of the respected creators in the worldwide game industry with its megabuster *Flashback*,™ a fast-paced action/adventure and winner of France's prestigious 4 d'Or award. With *Flashback*, Delphine Software set a standard in the field of animation. The amazingly fluid movements of the hero Conrad were obtained by using Rotoscoping, a technique that allows a movie-like animation of 24 frames per second.

Using the same technique, Delphine Software developed a fighting game called *Shaq Fu*® featuring Shaquille O'Neal, the US basketball star. Electronic Arts published the game in 1994 on multiple platforms.

In *Fade To Black*, Paul Cuisset (creator of *Flashback* and *Shaq Fu*) is again using an advanced technology: instead of basing animations on video footage (rotoscoping), his new system uses infra-red cameras to "capture" motion. (The character filmed has ultra-sensitive reflectors on his body.) *Fade To Black* uses a unique system of "virtual cameras" that follow the action, thus providing a movie-like feeling to the game. *Fade To Black* is in real-time 3-D with texture-mapped, polygon-rendered objects and backgrounds.

CREDITS

Directed by: Paul Cuisset

Created And Designed by:
Paul Cuisset

Level Design: Paul Cuisset,
Thierry Perreau

Project Manager: Philippe Chastel

Art Director: Thierry Perreau

2d Graphic Artists: Stéphane Aussel,
Thierry Bansront, Grégory Beal, Eric
Caron, Serge Fiedos, Jérôme France,
Hervé Gaerthner, Florian Guzek,
Béatrice Laurent, Cécile Thomas, Paul
Tumelaire

3d Object Modeling: Stéphane Aussel,
Thierry Bansront,
Serge Fiedos, Hervé Gaerthner,
Florian Guzek

3d Cinematic Sequences: Thierry
Bansront, Serge Fiedos, Yann Le Gall,
Thierry Levastre, Frédéric Loubiere,
Frédéric Michel

3d Animation Tracking: Jérôme
France, Florian Guzek, Denis Mercier,
Frédéric Michel,
Thierry Perreau, Paul Tumelaire

Actors and Stuntmen: Grégory Beal,
Anne Fossa, Jérôme France, Denis
Mercier, Paul Tumelaire

Graphic Design: Eric Caron, Jérôme
France, Paul Tumelaire

Story Board: Eric Caron

Music Composed by:
Raphaël Gesqua

Sound Effects: Raphaël Gesqua

Programmers: Philippe Chastel,
Sébastien Clement, Guillaume Genty,
Claude Levastre, Alain Ramond, Alain
Tinarrage,
Benoît Verillaud

Additional Programming:
Patrick Bricout, Arnaud Carre, Fabrice
Rodet

***Fade To Black* PlayStation Project
Manager:** Thierry Gaerthner

***Fade To Black* PlayStation**

Programming: Nicolas Perret, David
Rochedieu

***Additional Fade To Black* PlayStation**

Programming: Benoist Aron, Patrick
Bricout, Guillaume Genty, Fabrice
Rodet

Dialogist: Jean-Luc Dumon

Voices effects mixed at

L'Ours-Son Studio – Paris: Charles
Schlumberger

ELECTRONIC ARTS STAFF

Executive Producer: Randy Breen

Technical Producer:

Stephen Murray

Production Technicians:

Jeff Chang, Nathan Cummins, Paul
Niehaus, Steve Nix,
Serguei Savtchenko

Public Relations: Fiona Murphy

Product Manager: Albert Penello

Manual: Jason Armatta

Manual Layout: Corinne Mah

Quality Assurance: Chris Baena,
Rosalie Vivanco

Package Design: 13th Floor

Special Thanks: Henri-Paul Cartalat,
Lori Christensen, Philippe Delamare,
Anne-Marie Joassim, Lisa Higgins,
Marc Minier, Biamca Normann,
Frederic Raynal and all the Adeline
Software Team, Patrick Sigwalt,
Philippe Tabouriech, Matt Wolf

**TESTING SUPPORT
AND LOCALIZATION**

Language Test Coordinator:
Matt Eyre

Language Testing: Michael Gievers,
Ricardo Martinez Cantero, CTO of
Italy

Translations Supervisor:
Kirsten Vaughan

Translations: Didier Jumeau

Translation Testers: Kai Lebert,
Lemuel Haham

QA Testers: France: Christophe
Brusseaux, Patricia Cuisset, Romain
Huet, Sébastien Le Charpentier,
Vincent Merienne, Frédéric Pierrat

VOICE TALENT

Computer, Sarah Smith:

Tina Holland

Professor Bergstein,

Conrad Hart: Jerron Monroe

John O'Connor: Roger Jackson

Morphs, SuperMorph, Ageer, Oracle:

Robert Feero

Hank, Rebels, Cook: Bill O'Neil

*French and German version recorded
at Knocking Boots Productions Studios
Paris.*

Sound Engineers:

Dimitri Bodianski, Etienne Pauzzo

FRENCH VOICES

Sarah: Françoise Cadol

John O'Connor and Morphs:

Bruno Dubernat

Hanks and Rebels:

Philippe Dumond

Professor and Oracle:

Jean-Louis Faure

Conrad: Bernard Lanneau

Computer: Deborah Perret

GERMAN VOICES

Computer: Paula Klein

Conrad and Morphs:

Richard Sammel

Hank and Morphs: Yörg Schnass

Professor, Oracle, Morphs:

Florian Schneider

John O'Connor and Morphs:

Peter Semmler

Sarah: Doris Streibel

ELECTRONIC ARTS LIMITED WARRANTY

Electronic Arts warrants to the original purchaser of this Electronic Arts software product that the medium on which this computer program is recorded is free from defects in materials and workmanship for a period of ninety (90) days from the date of purchase. This Electronic Arts software program is sold "as is," without express or implied warranty of any kind, and Electronic Arts is not liable for any losses or damages of any kind resulting from use of this program. Electronic Arts agrees for a period of ninety (90) days to either repair or replace, at its option, free of charge, any Electronic Arts software product, postage paid, with proof of purchase, at the Electronic Arts Warranty Department. This warranty is not applicable to normal wear and tear. This warranty shall not be applicable and shall be void if the defect in the Electronic Arts software product has arisen through abuse, unreasonable use, mistreatment or neglect.

LIMITATIONS—This warranty is in lieu of all other warranties and no other representations or claims of any nature shall be binding on or obligate Electronic Arts. Any implied warranties applicable to this software product, including warranties of merchantability and fitness for a particular purpose, are limited to the ninety (90) day period described above. In no event will Electronic Arts be liable for any special, incidental, or consequential damages resulting from possession, use or malfunction of this Electronic Arts software product.

Some states do not allow limitations as to how long an implied warranty lasts and/or exclusions or limitations of incidental or consequential damages so the above limitations and/or exclusions of liability may not apply to you. This warranty gives you specific rights, and you may also have other rights which vary from state to state.

Need Help? Call EA's HINTS & INFORMATION HOTLINE for recorded hints, tips, and passwords 24 hours a day, 7 days a week!

In the US, dial 900-288-HINT (4468) In CANADA, dial 900-451-4873
75c per minute (95c for first minute). \$1.15 (Canadian) per minute.

If you are under 18, be sure to get a parent's permission before calling. Hotline requires a Touch-Tone telephone. Call length determined by user; average length is four minutes. Messages subject to change without notice.

NOTE TO HOTLINE CALLERS:

To help you quickly locate the information you need, Electronic Arts will gladly send you printed menus. To receive a copy, please send your name, address, title of game you want the menu to, and the hardware (Genesis, Super NES, IBM, etc.) to:

Hotline Menus
P.O. Box 7578
San Mateo, CA
94403-7578

NOTICE

Electronic Arts reserves the right to make improvements in the product described in this manual at any time and without notice.

This manual and the software described in this manual are copyrighted. All rights are reserved. No part of this manual or the described software may be copied, reproduced, translated, or reduced to any electronic medium or machine-readable form without the prior written consent of Electronic Arts, P. O. Box 7578, San Mateo, California 94403-7578, Attn: Customer Support.

RETURNS AFTER WARRANTY—To replace defective media after the ninety (90) day warranty period has expired, send the original CD to Electronic Arts' address below. Enclose a statement of the defect, your name, your return address, and a check or money order for \$15.00.

Electronic Arts, Customer Warranty, P.O. Box 7578, San Mateo, California 94403-7578

If you need technical assistance with this product, call us at (415) 572-2787 Monday through Friday between 8:30 AM and 4:30 PM, Pacific Time. EA Tech Support Fax: (415) 286-5080

No hints or codes are available from (415) 572-2787. You must call EA's Hints & Information Hotline for hints, tips, or codes.

HOW TO REACH US ONLINE

CompuServe: Game Publishers Forum A (GO GAMAPUB)

Or send e-mail to 76004,237

America OnLine: Send e-mail to ELECARTS

Internet E-mail: support1@ea.com

Or send e-mail to elecarts@aol.com or 76004.237@compuserve.com

World Wide Web: Access our Web Site at <http://www.ea.com>

FTP: Access our FTP Site at <ftp.ea.com>

If you live outside of the United States, you can contact one of our other offices.

In **Australia**, contact:

Electronic Arts Pty. Limited

P.O. Box 432

Southport Qld 4215, Australia

In the **United Kingdom**, contact:

Electronic Arts Ltd.

P.O. Box 835

Slough SL3 8XU, UK

Phone (753) 546465

In **Australia:** For Technical Support and Game Hints and Tips, phone the EA HOTLINE: 1 902 261 600 (95 cents per min.) ITM 7 days a week 10 AM—8 PM. If you are under 18 years of age parental consent required.

Software ©1995-1996 Delphine Software International.

Documentation © 1996 Electronic Arts. All rights reserved.

Fade to Black, Flashback, Delphine Software International, and Delphine International logos are trademarks of Delphine Software International.

Shaq is a registered trademark of Mine O' Mine, Inc.

CONTROL SUMMARY

FADE
BLACK

NOTE: The controls listed below are the default settings. Some advanced controls are only available on expert control configurations. To change the default setting, see *Controller* on page 7.

JUMP	PRESS ●
LEFT STEP	L2
RIGHT STEP	R2
WALK	D-BUTTON ↑
BACK UP	D-BUTTON ↓
CROUCH / DUCK	L1
TURN LEFT / RIGHT	D-BUTTON ← →
USE / ACTIVATE BUTTONS / ELEVATORS / OPEN LOCKERS	PRESS ▲
THROW A MINE	L1 + R1
RUN	PRESS ✕
DRAW GUN/SHOOT/AUTORELOAD	PRESS ■
RELOAD GUN	R1
ACCELERATE SPACESHIP	PRESS ✕
OPEN INVENTORY	SELECT
PAUSE MENU	START

Electronic Arts, 1450 Fashion Island Blvd., San Mateo, CA 94404

© 1996 Delphine Software. Fade to Black, Flashback the Quest for Identity, Delphine Software and the Delphine Software logos are trademarks of Delphine Software International. Electronic Arts and the Electronic Arts logo are registered trademarks of Electronic Arts. All rights reserved. Made in the USA. 750205A

Licensed by Sony Computer Entertainment America for use with the PlayStation game console. PlayStation and the PlayStation Logos are trademarks of Sony Computer Entertainment Inc. The ratings icon is a registered trademark of the Interactive Digital Software Association. Made in Japan. Manufactured and printed in the U.S.A. THIS SOFTWARE IS COMPATIBLE WITH PLAYSTATION GAME CONSOLES WITH THE NTSC U/C DESIGNATION. U.S. AND FOREIGN PATENTS PENDING.

